

Sailing Instructions (JAM-2002)

EVENT

The Jib and Main (JAM) Summer Regatta Series consists of eight scheduled races open to all sailing boats. The races will take place in the water of Eastchester Bay on Sundays 6/30, 7/7, 7/14, 7/21, 8/11, 8/18, 8/25 and 9/8.

RULES

The Racing Rules of Sailing 2001-2004 will govern except where suspended by these instructions. A boat shall have a minimum crew of two people on board at all time.

START AND FINISH LINE

The start and finish line will be between a white or yellow flag on the committee boat to starboard and the "S" mark to port. After starting and before finishing, a boat shall not sail through the finish line, but may sail to either side of it. Any boat sailing through the finish line may correct her error by sailing out the same side from which she entered, or is subject to protest by the Race Committee

START TIMES AND SIGNALS

Division I, all JAM boats; Division II, one design boats.
See scratch sheet for boat division assignment.

<u>TIME</u>	<u>Div I</u>	<u>Div II</u>	<u>Cylinder</u>
2:50	Warning		White
2:55	Prep	Warning	Blue
3:00	Start	Prep	Red
3:05		Start	Blue

COURSES/RESTRICTED AREAS

The course to be sailed will be indicated by 2 letters on the Committee Boat corresponding to the Group Code (N, W, E, S) and Course Code (A, B, C, D, E). Round all marks to port
Note the restricted areas on the chart. Any yacht sailing through these restricted areas, except when rounding 'B' as a specified mark of the course, will be disqualified.

INDIVIDUAL RECALL

The Race Committee will fly the mandatory 'X' flag if there are individual yachts over early, and attempt to hail by sail number and 1 horn. Yachts in the vicinity are also requested to convey this information. When returning to start over, a yacht must keep out of the way of other starting yachts.

GENERAL RECALL

A general recall for all starters of a division shall be signaled by 2 horns and raising the "First Repeater", 'FR' code flag. One minute after the code flag is lowered, the starting sequence shall be repeated beginning with the five minute Preparatory signal for the division being started.

POSTPONEMENTS

A postponement may be signaled during the starting sequence by 2 horns and raising the "Answering Pennant", 'AP' code flag. The postponement is concluded by 1 horn and lowering of the 'AP'. One minute latter the staring sequence shall be repeated beginning with the Warning signal. After a maximum of 1 hour the postponement shall be concluded as above and the races will be canceled one minute later by the blowing of 3 horns and the raising of the code flag 'N'.

SHORTEN COURSE

The race committee may select to shorten the course and finish at one of the mark rounding.

TIME LIMIT

Each vessel must finish within 3 hours of its division's starting time to be declared a finisher.

SCORING and HANDICAPS

Races will be scored using time-on-time based on factors derived from a boat's PHRF certificate rating, using the formula $F = 600/(480+PHRF)$. Series scoring will be done using the Cox-Sprague scoring system. Cumulative scores will be calculated to the third decimal place and ties will not be broken.

QUALIFYING

To qualify, a boat must complete in at least four races started in her division.

RACE COMMITTEE DUTIES

If a boat performs race committee duties for one race, it will be counted towards one of the four qualifying races.

THROWOUTS

One throwout will be given to boats sailing in 6 or more races.

RADIO COMMUNICATIONS

The Race Committee will monitor VHF channel 72

AWARDS

Trophies for all divisions will be presented at the annual EBYRA awards banquet in December.

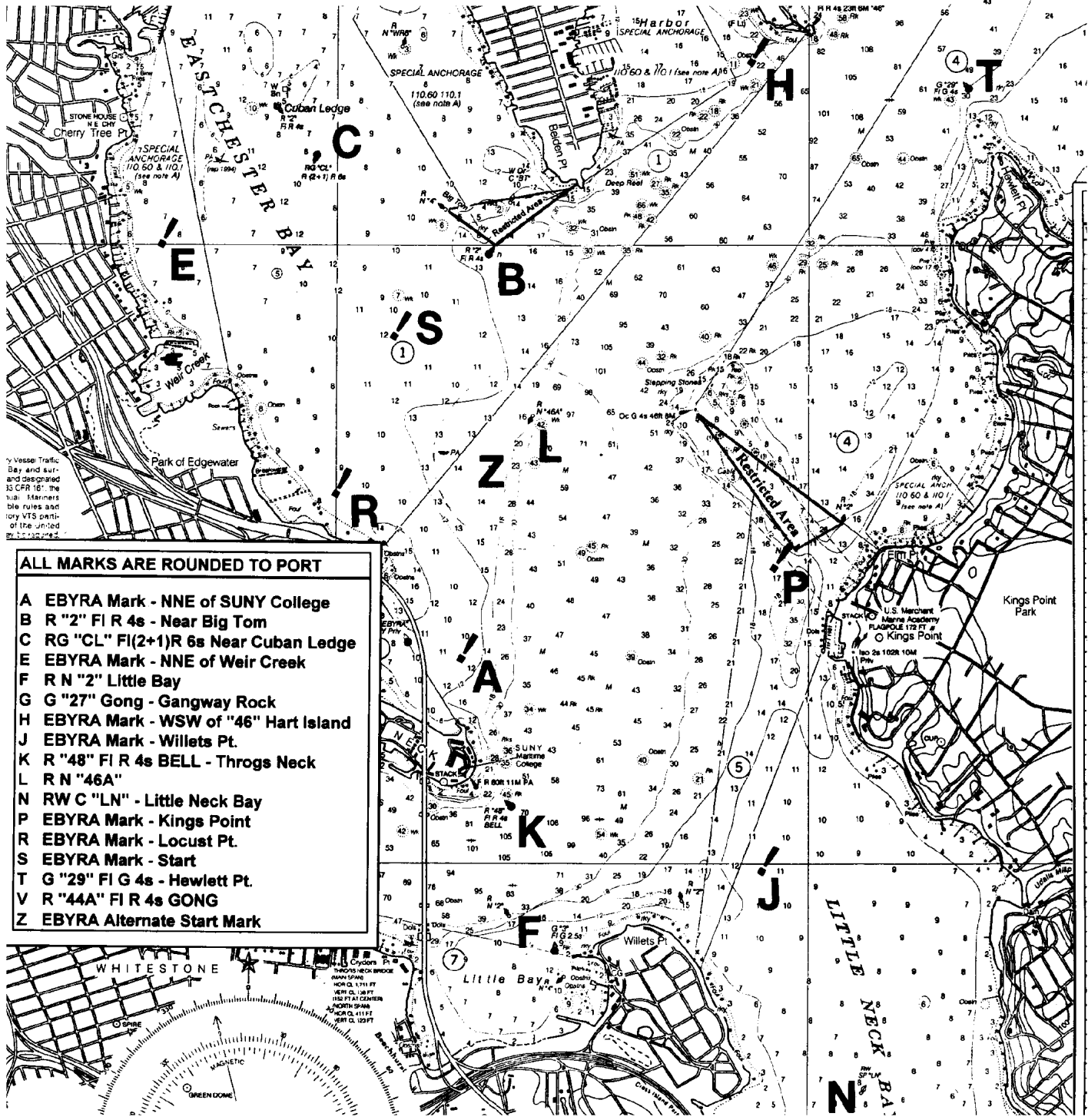
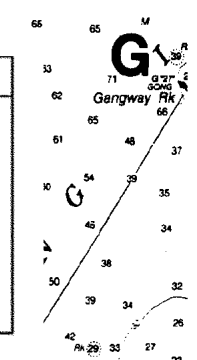
ADMINISTRATION

Eastchester Bay Yacht Racing Association, Inc.
P.O. Box 126, City Island, NY 10464
www.ebyra.org

INFORMATION

Fred Cosandey - Stuyvesant Yacht Club – (732) 445-4942 – cosandey@scils.rutgers.edu

Course S			Course E			Course W			Course N		
	Marks	Dist		Marks	Dist		Marks	Dist		Marks	Dist
A	K	3.2	A	H	2.3	A	RH	3.9	A	BK	2.8
B	KPB	4.3	B	HR	3.9	B	RLBRB	4.1	B	CP	3.8
C	JB	4.3	C	HRBR	5.1	C	RT	4.8	C	BJ	4.4
D	KLK	5.6	D	TR	5.0	D	RPT	5.4	D	CKP	5.2
E	PCLC	5.9	E	GR	6.7	E	RG	6.7	E	CJ	5.3



- ALL MARKS ARE ROUNDED TO PORT**
- A EBYRA Mark - NNE of SUNY College
 - B R "2" FI R 4s - Near Big Tom
 - C RG "CL" FI(2+1)R 6s Near Cuban Ledge
 - E EBYRA Mark - NNE of Weir Creek
 - F R N "2" Little Bay
 - G G "27" Gong - Gangway Rock
 - H EBYRA Mark - WSW of "46" Hart Island
 - J EBYRA Mark - Willets Pt.
 - K R "48" FI R 4s BELL - Throgs Neck
 - L R N "46A"
 - N RW C "LN" - Little Neck Bay
 - P EBYRA Mark - Kings Point
 - R EBYRA Mark - Locust Pt.
 - S EBYRA Mark - Start
 - T G "29" FI G 4s - Hewlett Pt.
 - V R "44A" FI R 4s GONG
 - Z EBYRA Alternate Start Mark

